

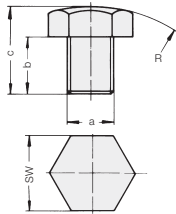


# ROEMHELD

Catalogue – Issue 5-03 E

# G 3.800

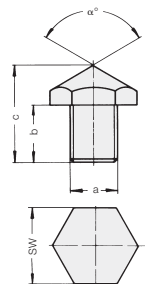
## Contact Bolts



### Contact bolts, dome head

for nom. cyl. Ø D	a	b	c	R	SW	Part-no.
12	M 5	9	19	20	8	3614-027
16	M 6	10	20	20	10	3614-016
12/16	M 6	6	9.5	20	10	● 3614-039
25	M 8	10	20	20	11	3614-001
25	M 10	12	22	35	17	3614-002
20/25	M 8	8	13	25	13	● 3614-038
32/40	M 12	12	22	45	19	3614-028
40	M 16	20	30	60	24	3614-003
50	M 20	25	35	60	30	3614-015
63	M 27	30	47	100	41	3614-017
80	M 30	35	54	100	46	3614-018
100	M 42	45	71	140	65	3614-019
125	M 48	60	90	250	75	3614-020

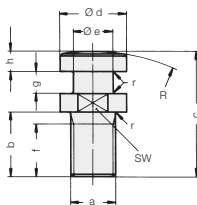
● not hardened, for B 1.460



### Contact bolts, cone head

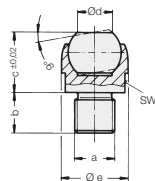
for nom. cyl. Ø D	a	b	c	α°	SW	Part-no.
12	M 5	9	16	120	8	3614-033
12/16	M 6	6	18	90	10	*3614-068
16	M 6	10	22	90	10	3614-032
20/25	M 8	8	22	90	13	3614-069
25	M 10	12	27	90	17	3614-021
32	M 12	12	25	120	19	3614-031
40	M 16	20	35	120	24	3614-022
50	M 20	25	40	120	30	3614-023
63	M 27	30	50	120	41	3614-024

\*for B 1.460



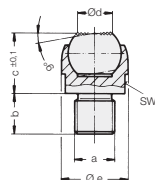
### Contact bolts with coupling pin, max. operating pressure, tractive 350 bar

for nom. cyl. Ø D	a	b	c	Ød	Øe	f	g	h	r	R	SW	Part-no.
25	M 10	14.5	32	20	10	12	6.5	5.5	1	320	17	3614-070
32	M 12	14.5	32	20	10	12	6.5	5.5	1	320	17	3614-091
40	M 16	20	40	25	14	14	7	6	1.5	400	22	3614-236
50	M 20	28	56	33.2	17	22	10	10	1.5	500	27	3614-237
63	M 27	39	75	40	23	32	13	12	2	630	36	3614-065
80	M 30	35	89	52	28	25	19	19	2.5	800	46	3614-066



### Swivel contact bolt, flat face

max. load [kN]	for nom. cyl. Ø D	a	b	c±0.02	Ød	Øe	SW	Part-no.
10	12/16	M 6	6	13	7.2	13	11	3614-228
10	20/25	M 8	8	13	7.2	13	11	3614-072
25	25	M 10	10	18	10.5	20	17	3614-073
25	32/40	M 12	12	18	10.5	20	17	3614-074
90	40	M 16	16	27	20	30	27	3614-075



### Swivel contact bolt, serrated face

max. load [kN]	for nom. cyl. Ø D	a	b	c±0.01	Ød	Øe	SW	Part-no.
10	20/25	M 8	8	13	7.2	13	11	3614-131
25	25	M 10	10	18	10.5	20	17	3614-194
25	32/40	M 12	12	18	10.5	20	17	3614-118
90	40	M 16	16	27	20	30	27	3614-119

Subject to change without notice

# HYQUIP

New Brunswick Street Horwich Bolton BL6 7JB UK  
 Tel: +44 (0)1204 699959 Fax: +44 (0)1204 699542  
 Email: [enquiries@hyquip.co.uk](mailto:enquiries@hyquip.co.uk) Web: [www.hyquip.co.uk](http://www.hyquip.co.uk)