



ROEMHELD

Issue 7-03 E

C 2.952

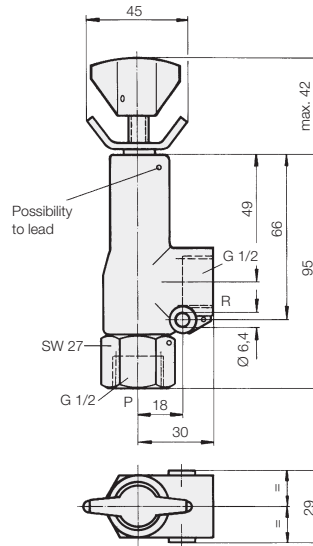
Pressure Relief Valve Pressure Reducing Valve with Check Valve



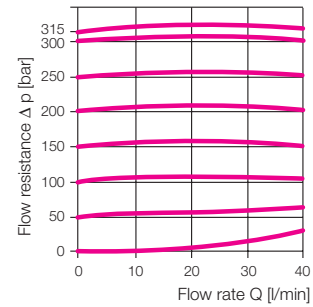
Pressure relief valve

Protection against exceeding the max. operating pressure of the fixture (safety valve) or limiting of working pressures.

Type Poppet valve, directly controlled
Type of mounting Installation in line
Port size G 1/2



Δ p-Q curves



Oil viscosity during measurement 50 mm²/s

Hydraulic characteristics

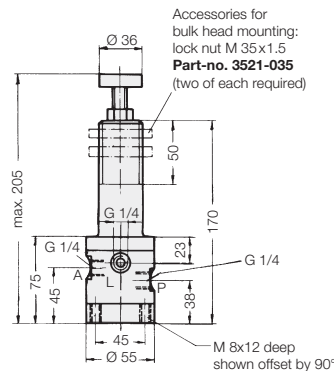
Range of operating pressure $p_o = 0-500$ bar
Range of adjustment $p_v = 0-500$ bar
Adm. pressure $P = 500$ bar
 $R = 20$ bar
Flow rate $Q_{max} = 40$ l/min
Weight [kg] 0.3
Part-no. **2952-521**



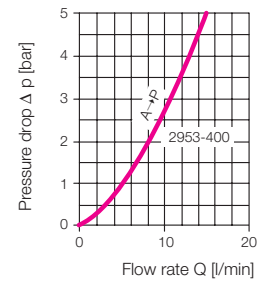
Pressure reducing valve with check valve

Type Spool valve
Type of mounting In-line pipe or bulk head mounting
Port size G 1/4

ND 5



Δ p-Q-curve for kinematic viscosity of 36x10⁻⁶ m²/s (HLP 46 at 50 °C)



Hydraulic characteristics

Range of operating pressure $p_o = 0-200$ bar
Range of adjustment $p_v = 10-150$ bar
Leakage rate approx. 0.5 cm³/s at 2953-400 (Measured with hydraulic oil HLP 46 at 50 °C and pressure set at 100 bar)
Weight [kg] 1.7
Part-no. **2953-400**

Subject to change without notice