



# ROEMHELD

Issue 2-08 E

## C 2.952

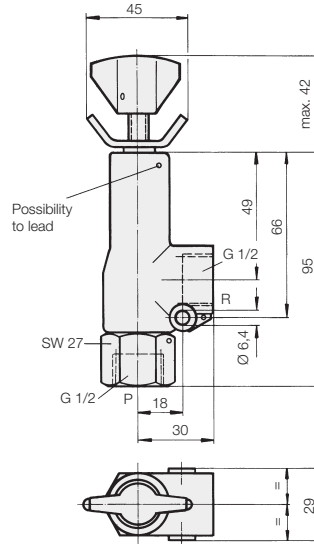
### Pressure Relief Valve Pressure Reducing Valve with Check Valve



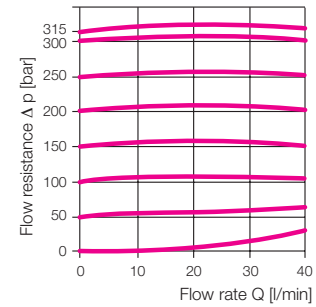
#### Pressure relief valve

Protection against exceeding the max. operating pressure of the fixture (safety valve) or limiting of working pressures.

Type Poppet valve,  
directly controlled  
Type of mounting Installation in line  
Port size G 1/2



#### Δ p-Q curves



Oil viscosity during measurement 50 mm<sup>2</sup>/s

#### Hydraulic characteristics

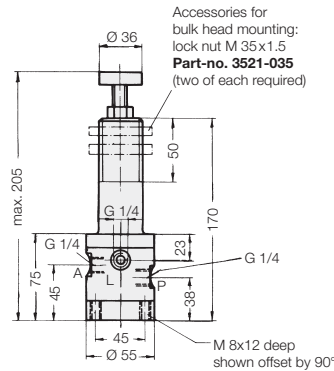
Range of operating pressure  $p_e = 0-500$  bar  
Range of adjustment  $p_v = 0-500$  bar  
Adm. pressure  $P = 500$  bar  
 $R = 20$  bar  
Flow rate  $Q_{max} = 40$  l/min  
Weight [kg] 0.3  
**Part-no. 2952-521**



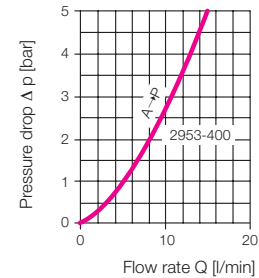
#### Pressure reducing valve with check valve

Type Spool valve  
Type of mounting In-line pipe or bulk head mounting  
Port size G 1/4

#### ND 5



#### Δ p-Q-curve for kinematic viscosity of 36x10<sup>-6</sup> m<sup>2</sup>/s (HLP 46 at 50 °C)



#### Hydraulic characteristics

Range of operating pressure  $p_e = 0-200$  bar  
Range of adjustment  $p_v = 10-150$  bar  
Leakage rate approx. 0.5 cm<sup>3</sup>/s at 2953-400  
(Measured with hydraulic oil HLP 46 at 50 °C and pressure set at 100 bar)  
Weight [kg] 1.7  
**Part-no. 2953-400**

#### Important note!

The leakage oil line "L" to the reservoir must be without pressure.

Subject to change without notice