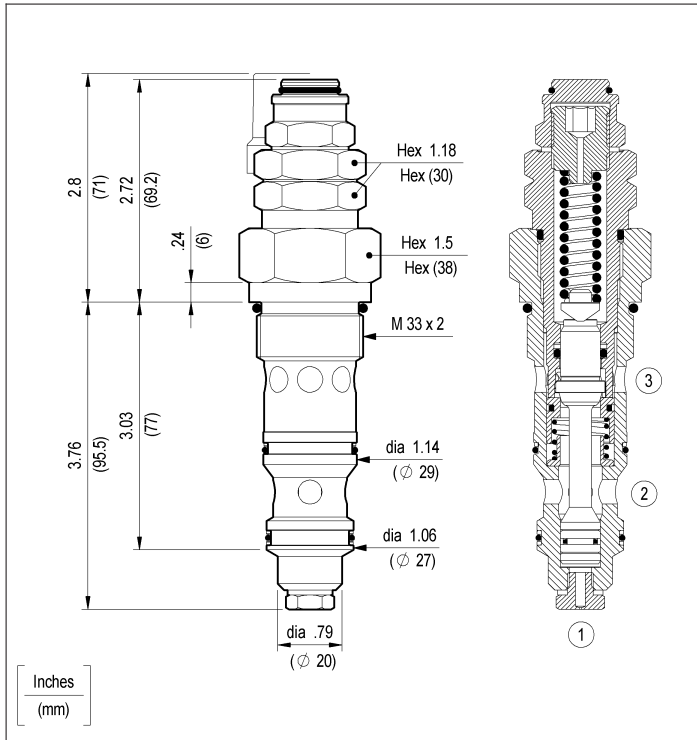


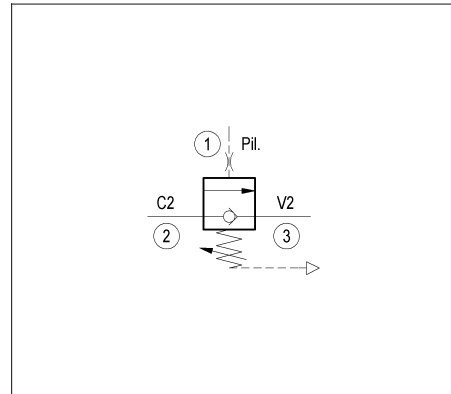
**COUNTERBALANCE, EQUAL AREA VENTED  
GUIDED POPPET TYPE  
SPECIAL CAVITY**

**VBSO-SEC-CCAP-33-AD0-10**

**04.59.17.03 - 99 - Z**



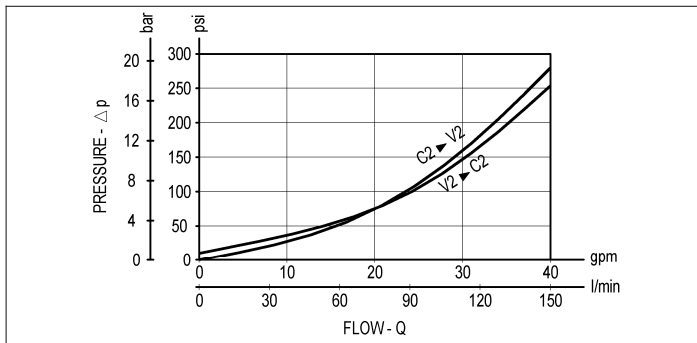
When pressure at 3 rises above the spring bias pressure, the check seat is pushed away from the piston and flow is allowed from 3 to 2. The valve is normally closed from 2 to 3, independent of pressure at port 2; when pilot pressure at port 1 rises above the pressure setting, flow from 2 to 3 is allowed. The spring chamber is vented to atmosphere allowing operation of all functions independent to back pressure at 3.



**TECHNICAL DATA**

Max. pressure:	5000 psi	(350 bar)
Max. flow:	40 gpm	(150 l/min)
Special cavity :	CC063A-01 (see page CT.S.005.U)	
Installation torque :	148-167 ft-lb	(200-225 Nm)
Weight:	1.455 lbs	(0.660 Kg)

\* Setting is performed pressurizing Pil port.  
Pilot pressure range: 45-435 psi (3-30 bar), see table "Z".



Z	SPRINGS		
	Adj. press. range psi (bar)	Press. increase psi / turn (bar/turn)	Standard setting psi (bar)
10	45-435 (3-30)	94 (6.6)	350* (25*)